



9A Westfield, Selby, YO8 9DH

SAVE TIME & BOOK YOUR VIEWING ON THE JIGSAW WEBSITE & CLICK 'REGISTER TO VIEW A PROPERTY' FROM OUR MAIN MENU

- Two Bedroom
- Freehold
- Gas Central Heating
- Semi-Detached
- EPC: E
- Garage & Off-Street Parking
- Popular Location
- Council Tax Band: B
- Close to Amenities

£1,000 PCM

Two Bedroom Semi-Detached | Popular Location | Garage & Off-Street Parking | Close to Amenities | Furnished

Jigsaw Letting are pleased to welcome to the market this delightful semi detached house, nestled in the charming area of Westfield, Selby, offering a perfect blend of character and modern living. Built in 1859, the property has been recently refurbished to a high standard, ensuring a comfortable and stylish home for its new occupants.

Spanning 667 square feet, this two-bedroom residence features two inviting reception rooms, providing ample space for relaxation and entertaining. The layout is thoughtfully designed, making it ideal for both families and professionals alike. Each bedroom is well-proportioned, offering a peaceful retreat at the end of the day.

The property boasts two bathrooms, a rare find in homes of this age, adding convenience for residents and guests. The fully furnished interior is tastefully decorated, allowing you to move in with ease and start enjoying your new home right away.

Gas central heating ensures warmth and comfort throughout the colder months, making this house a cosy haven. The location in Westfield is particularly appealing, with local amenities and transport links within easy reach, providing a perfect balance of tranquillity and accessibility.

This semi-detached house is not just a property; it is a wonderful opportunity to embrace a lifestyle in a historic yet modern setting, this home is sure to impress with its charm and contemporary features. Do not miss the chance to make this lovely house your own.

COUNCIL TAX BAND

Please note that the council tax band for the property has either been advised by the owner or we have sought from online resources. Whilst we endeavour to ensure our details are accurate and reliable, we strongly advise to make further enquiries before continuing.

HOW DO I APPLY FOR A PROPERTY?

To avoid disappointment please contact the office to request an application form for the property you wish to apply for following your viewing.

LETTINGS FEES UPON APPLICATION

Additional fees apply for this property and are as follows; 1 weeks rent holding fee for each property. Please note, the holding fee is deductible from the first month's rent on the property if successful. There will also be a bond for the property equal to 5 weeks rent which will be held for the duration of the tenancy with the DPS. Go to, www.jigsawletting.co.uk or call for more details

LETTINGS VIEWINGS

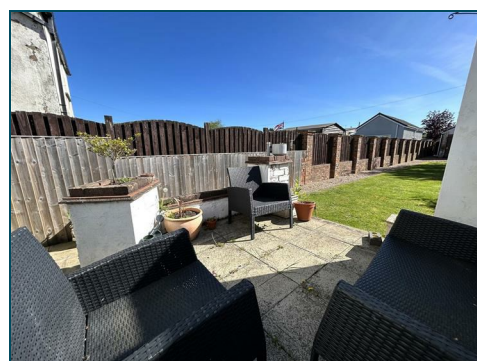
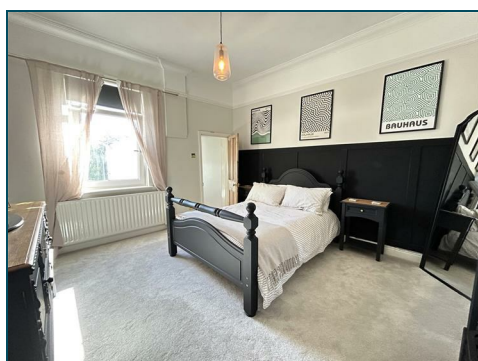
Strictly by appointment with the sole agents by contacting 01757 241123. If there is any point of particular importance to, that we will be pleased to provide additional information or to make any further enquiries. We will also confirm that the property remains available. This is particularly important if you are travelling some distance to view the property. A full copy of the EPC for the property is available upon request.

OPENING HOURS LETTING TEAM

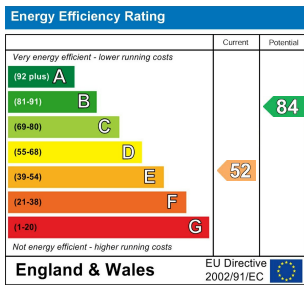
Monday – Friday 9.00am to 5.00pm Saturday – 9.00am – 1.00pm

TO LET PROPERTY DETAILS

Whilst we endeavour to make our property details are accurate and reliable, if there is any point which is of particular importance to you, please contact us and we will be pleased to check the information. Do so particularly if contemplating travelling some distance. These particulars are issued in good faith but do not constitute representations of fact or form part of any offer or contract.







safeagent
11 Finkle Street, Selby, North Yorkshire, YO8 4DT
info@jigsawmove.co.uk | www.jigsawmove.co.uk | info@jigsawletting.co.uk | www.jigsawletting.co.uk
Jigsaw Move : 08975826 VAT: 215610542 | Jigsaw Letting : 07385709 VAT: 847215227



Look for Propertymark Protection to ensure your agent is qualified and regulated

aria propertymark PROTECTED | hales propertymark PROTECTED